



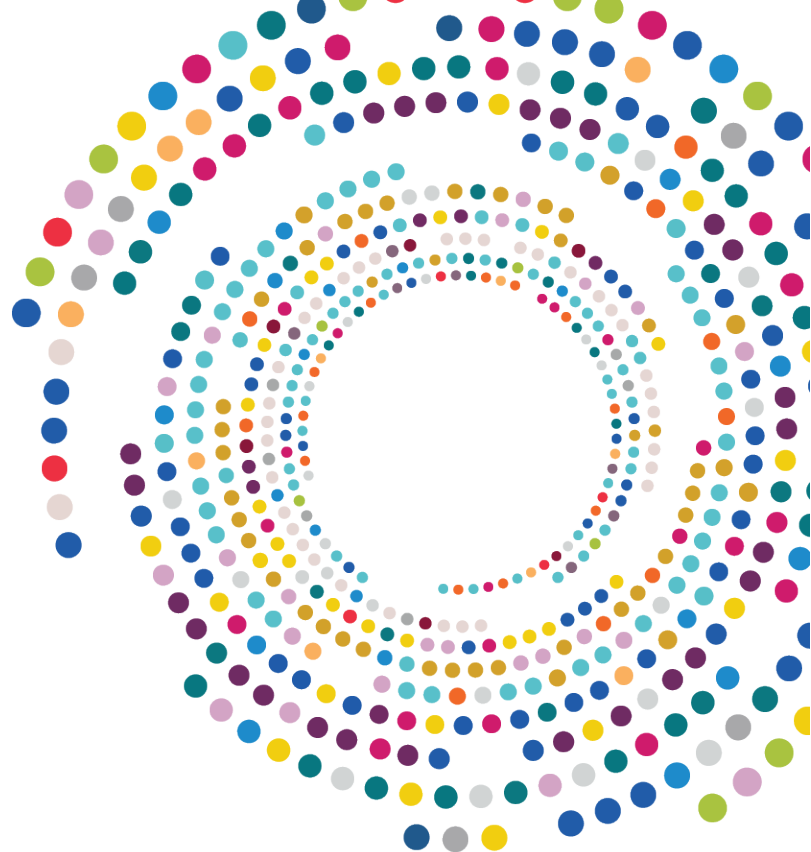
Cybersecurity On Steroids: Navigating COVID-19's New Threats to Companies and Private Households

Steve Bunnell, O'Melveny

John Dermody, O'Melveny

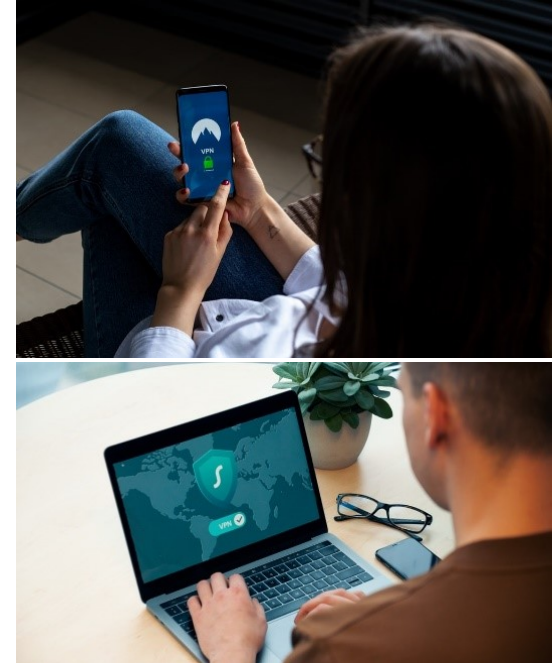
Danielle C. Gray, Blue Cross North Carolina

July 16, 2020



COVID-19 Created New Cyber Landscape

- **New Networks, Uncertain Conditions**
- **Services Shifting Online**
- **Telehealth**
- **Modified Business Relationships to Address Remote Operations**

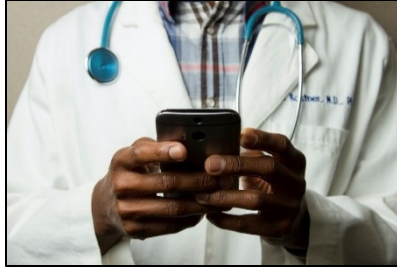
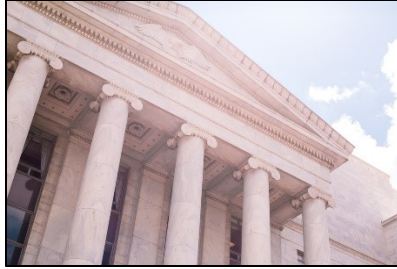


Opportunities For Exploitation

- FBI has been receiving 3,000-4,000 cybersecurity complaints each day, up 300%
- COVID-19 Related Phishing
- Ransomware is an Existential Threat
- Business E-mail Compromise



Targeted Industries

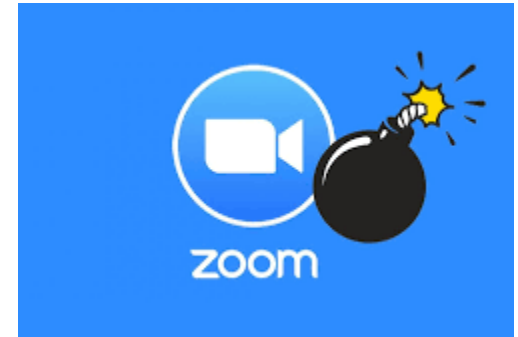


Challenges in a Remote Environment

Confidentiality of Information

- Breaches (electronic and paper)
- Webinars
- Telehealth

Uncertain Enforcement Post COVID-19



Challenges in a Remote Environment (Cont.)

Availability and Integrity of Information

- Interruption of Services
- Exploitation of Connected Devices



Video: Home Security Camera Crisis



<https://abcnews.go.com/GMA/News/video/terrifying-video-familys-hacked-ring-camera-system-67704081>

Battling the Pandemic

Tension Between Public Health and Privacy

- Employer Health Questionnaires
- Contact Tracing Apps
- Patchwork of Privacy Laws



Practical Actions To Protect Your Organization

- Layered Defense
- Training: People are the Weakest Link
- Up-to-Date Incident Response Plan
- Cyber Incident Exercises
- Review Terms of Insurance Policy



Practical Actions To Protect Yourself

- Use two-factor authentication (2FA)
- Regularly change passwords, and consider a password manager
- Don't leave yourself logged into devices that others (especially kids) have access to
- Regularly visit and monitor your accounts, especially financial accounts
- Use extra diligence before clicking or opening any files, even from work





Thank you for joining us!

Follow up questions?

Steve Bunnell: **sbunnell@omm.com**

John Dermody: **jdermody@omm.com**

CLE Form: **<https://www.surveymonkey.com/r/D6D8XRX>**

CLE Code: **619321**

Feedback: **alumni@omm.com**

